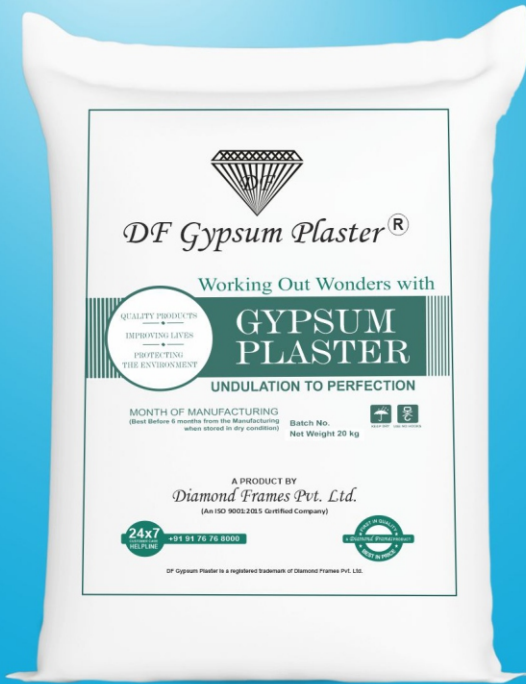


Diamond Frames™
False Ceiling & Partition Systems

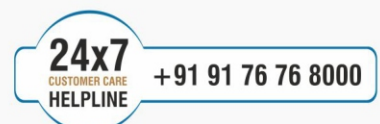


 SMOOTH FINISH  VERSATILE  CRACK RESISTANCE  HIGH COMPATIBILITY  ECONOMICAL

DF GYPSUM PLASTER SOLUTIONS



Undulation to Perfection





DF Gypsum Plaster is suitable for all backgrounds like Blocks or RCC (Concrete) surfaces making it a preferable choice of all the leading developers in India.

DF Gypsum Plaster is a single-coat gypsum plaster that is used as a binding material for Internal finishes, which include, but are not limited to Aerated Blocks & RCC slabs and walls. It provides a seamless, smooth, superior and durable base for application of ornamental finishes over internal walls and ceilings. It acts as a protective cover for bricks and stones. It is a fine composite of Calcium, Sulphate Hemi-hydrate, commonly known as Gypsum Plaster, which requires only water to prepare it for use.





Application & Its Use

Gypsum plaster has been used for a long time in the construction sector thanks to its unique and excellent properties. For instance, it offers excellent acoustic and thermal properties while giving levelled walls with a smooth & seamless finish. Thus there is great demand for gypsum plasters. In comparison with sand cement plaster, DF gypsum plaster offers the following advantages:

Quicker Construction : The application of cement sand plaster takes a lot of time. It requires 28 days of water curing, and POP punning is utilized to make the surface smooth. Using gypsum plaster, walls can be completed quickly, and the surface is ready for painting in 3 days (after complete drying).

Sustainable Construction: DF Gypsum plaster is sold in bags of 20 kg that are ready to use. You only need to add water to finish the process. On the other hand, river sand mining is prohibited in many jurisdictions because it harms the ecosystem. The greatest alternative to river sand for all internal plastering applications is a Gypsum Plaster.

Elimination of shrinkage cracks: Sand cement plaster has significant shrinkage issues. This is brought on by improper curing and high heat of hydration. Gypsum plaster has a higher immunity to these issues. Thus it protects it from shrinkage and cracks.

Lighter construction: Gypsum Plaster weighs half as much per cubic meter as typical sand cement plaster hence, plastering walls with gypsum plaster reduces the building's structural load.

Storage & Handling



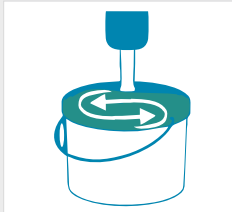
The bag is ergonomically designed to make storage and handling easier. These ergonomically designed bags assist in keeping neatly stacked pallets. Special care needs to be taken to ensure dry storage conditions, as moisture shortens the setting time, causes lumps/ nodule formation in the bags and therefore may affect the strength of the set plaster work. Usage of hooks or any sharp tools should be avoided while moving bags from one location to another.

Diamond Plaster is a registered trademark of Diamond Frames Pvt. Ltd.



Method of application

DF Bond-Aid



Properly stir the content



Apply using brush / roller



Leave area to dry completely

DF Fiber Mesh



Make sure the surface area is clean



Use the DF Fiber Mesh where two substrates converge

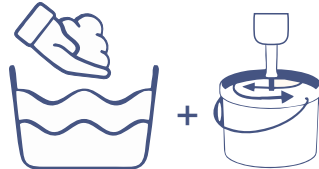


Apply the plaster as per requirement

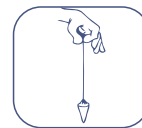
DF Gypsum Plaster



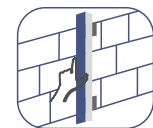
Clean & wet the surface prior to application



Add DF Gypsum Plaster powder to water in 1.5:1 portion and mix until it becomes a paste



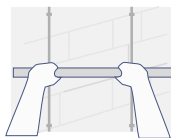
Check and make a bull mark as per plumb & right angles



Fill the gaps using the plaster paste with the help of a vertical bull pad



Apply the paste on the wall with the help of a Trowel



Level the plaster on the wall by using a Bottom (aluminum box pipe)



To get a smoother finish, mix thin slurry & apply on the levelled surface with the Trowel



Leave the surface to dry completely before painting

Technical Drivers of Diamond Plaster

- Approx. Coverage - 80-90 m²/ton*
- Initial Setting Time - 15 - 20 mins
- Final Setting Time - 20 - 25 mins
- Bulk Density (Dry) - 650 - 770 Kg/m³
- Bulk Density (Wet) - 1.4 - 1.5 gm/m³

Chemical Composition : Calcium Sulphate Hemihydrate : $\text{CaSO}_4 \cdot \frac{1}{2}\text{H}_2\text{O}$

Benefits of DF Gypsum Plaster

- Direct single coat application
- Fire resistant
- It is compatible with any type of paint
- Available sizes in 20kg packaging
- Free of shrinkage cracks
- Attractive and smooth finish
- True color shade and gloss for paints with enhanced light reflectance

Test Method : IS: 2547(Part1)- 1976 (Reaffirmed 2012)
IS: 1288 1982 (Reaffirmed 2012),

DF Bond-Aid



Application Area



RCC Column



Blocks Wall



Concrete Slab



Shear Wall



Beams

Suitable for any smooth surface

DF Bond-Aid is specifically designed to provide strong bonding properties on the solid surface structures and interior surface of gypsum or other plaster-based wall coating. Bond-Aid has a combination of ingredients that helps to form a strong surface and also enhances the bonding capabilities. It acts as a high-performance bonding agent for gypsum or sand cement plaster after the application on a smooth surface.

Technical Specification

Product Characteristics	Green, Granular, Aqueous
Appearance	Turquoise Green
Tensile Bond Strength	>2 MPA
Coverage	Approx. 50 sqft / Kg
Properties	Polymer based liquid

DF Fiber Mesh



The **DF Fiber Mesh** is made of a self-adhesive compound which helps in speeding up the taping procedure. The tape is laid flat on the surface and due to its properties it gets stuck to the surface smoothly. The use of **DF Fiber Mesh** is highly beneficial as it gives elasticity, protection against mould and a smooth finish.

Features: Better elasticity, High crack resistance, Great tensile strength, Great self-adhesive properties, Smooth finish without any blisters.

Product Description	Size	GSM	Weight	Suitable with
DF Fiber Mesh	100 mm 150 mm	145	787gm / 1.070gm	Gypsum, Jointing Compound & Sand Cement

Installation Guidelines

DF Fibre Mesh is available in 100mm and 150mm rolls. It is quite easy to use thanks to the self-adhesive composition. With a utility knife, cut the DF Fiber Mesh. Next, start at one end of the seam and press the DF Fibre Mesh onto the plasterboard surface so that it spans the junction and sits flat against the wall. Apply the jointing compound to the DF Fibre Mesh once it has been adhered to the surface to make sure it is smooth and free of cracks.

Some of our prestigious projects across India where DF Gypsum Plaster is approved & used



DLF Camellias, Gurgaon



Google Connect Divyashree, Hyderabad



Sobha Dream Heights, Gujarat



Embassy Lake Terrace, Bangalore



Tata Eureka Park, Noida



Intellect Design Arena Ltd, Chennai



Embassy Boulevard, Bangalore



Aurum Vetures, Mumbai



Rajapushpa Regalia, Hyderabad



Marriott Hotel, Vashi(Mumbai)



Aurobindo Galaxy Tower, Hyderabad



Opas Park, Mumbai

Some of our prestigious projects across India
where DF Gypsum Plaster is approved & used



Amar Tech Park, Pune



Divyasree Omega, Hyderabad



Yashoda Hospital, Hyderabad



GAR Infobahn, Hyderabad



Infosys Sez Campus, Pan India



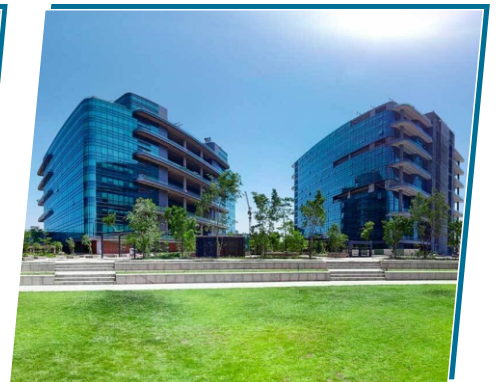
My Home Twitza, Hyderabad



DLF SEZ Campus, Chennai



DLF Cyber City, Hyderabad



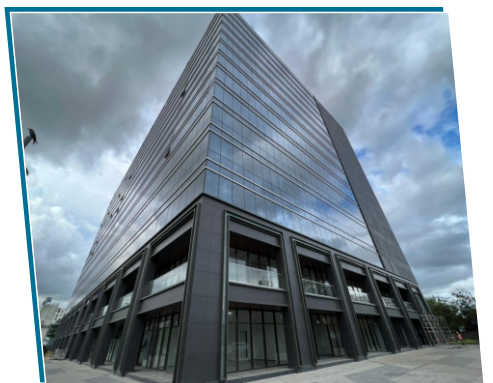
Amazon Development Centre, Pune



Jyothi Pinnacle, Hyderabad



Kingfisher Tower, Bangalore



Amar Tech Park, Pune

Our Presence

All India Networks

Head Office DIAMOND FRAMES PVT LTD

(An ISO 9001 - 2015 Certified Company)

Head Office : # 4, Corporation Shopping Complex, Project - II, Brewery Road, Shenoy Nagar, Chennai - 600030,
Tamil Nadu, INDIA. Contact No : 044 - 42307490, 26216699

Branch Offices



MOVING TO THE
**NEXT
LEVEL**
IN PURSUIT OF EXCELLENCE

Email: info@diamondframes.in | Website: www.diamondframes.in



24x7
CUSTOMER CARE
HELPLINE

+91 91 76 76 8000